

# *Leeds-Grenville Stewardship Council*

## *2011 Annual Report*



**SHEFFIELD PROPERTY RED HORSE LAKE**



## Leeds-Grenville Stewardship Council Annual Report 2011

### **Message from the Coordinator**

I hope you enjoy this Annual Report, the first of the newly formed Leeds-Grenville Stewardship Council (LGSC). Effective January 1 2011, the Leeds and the Grenville Stewardship Councils were amalgamated. Thanks to the cooperation and great work of the volunteers and staff we have moved forward to continue the great work carried out by the two previous Councils.



LGSC is comprised of 19 dedicated local residents who volunteered their time to work on over 25 environmental projects throughout the United Counties of Leeds and Grenville in 2011. The Council focuses on projects in four main theme areas: healthy aquatic ecosystems, sustainable forests, education and awareness, and species at risk.

Many of our projects cover more than one theme. For example, our year started out with the completion of a major partnership project, our cover story for 2011. One of our Council members George Sheffield, his wife Nancy, and his four siblings Rob, Margaret, Julia and Frances completed the sale/ donation of 607 acres of land with 7 kilometers of waterfront shoreline to Charleston Lake Provincial Park. Their contribution to the people of Ontario is truly monumental.

We continue to work with farmers to improve the water quality upstream of the major headwater lakes of the Gananoque River system, a priority area for LGSC and many of our partners. This includes our ongoing partnership with the Charleston Lake Association and completion of the second year of stream restoration at the Leeds Community Pasture.

Our tree planting program continues to grow, supported by the generous support of landowners, Trees Ontario and The Ontario Ministry of Natural Resources (OMNR). LGSC planted 71,500 trees in 2011. Tree planting crosses over to our education theme, as 40 volunteers and teachers helped 243 students to plant 8,100 of these trees.

Our education and awareness activities have grown as we support the Species at Risk (SAR) Curriculum program which is used by over 40 grade four and seven teachers in Leeds-Grenville. These teachers teach 1,200 students about SAR every year. LGSC education programs provided education opportunities for another 1,500 students in 2011.

The Council continues to monitor and distribute to landowners grey ratsnake nesting boxes. Two boxes were again successful this year, yielding a catch of over 100 eggs. We formed a new partnership with Bird Studies Canada this year to monitor chimney swifts.

We are thankful for the many partners who help us to deliver more than any of us could achieve on our own. We look forward to their continued friendship and cooperation.

Thanks to all,

Martin Streit  
Stewardship Coordinator

## **HEALTHY AQUATIC ECOSYSTEMS**

### **Charleston Lake Watershed Stream Restoration Projects**

The Charleston Lake Environmental Association (CLEA) annually provides generous funding to the Leeds-Grenville Stewardship Council (LGSC) for projects to improve water quality on the lake. One of the objectives of the Charleston Lake Plan is to reduce



excessive nutrient supply to the lake from all sources to prevent further enrichment and loss of oxygen. There can be a varying degree of nutrient runoff into the streams which feed Charleston Lake, depending upon the kinds of agricultural use.

LGSC works with the Leeds Soil and Crop Improvement Association and local farmers to fence livestock from creeks, develop alternative watering sources, improve water crossings, restore trees and shrubs to shorelines, and rehabilitate wetlands

and pastures. This work started in 2004 on Fosters Creek and since 2006 has been focused on the Beales Creek watershed. A landscape view showing the Beales Creek projects is shown on the following page. The following activities have been completed, resulting in the exclusion of more than **1,100 cows from the waterways:**

	<b><u>2011</u></b>	<b><u>Total- to-date</u></b>
■ Projects	2	19
■ Cattle exclusion fencing (kilometers)	1.0	16.3
■ Alternative watering systems	1	16
■ New/ improved water crossings	2	11
■ Retired pasture hectares (acres)	--	24 (60)
■ Restored wetland	--	1
■ Tree planting (trees)	--	31,050

LGSC has been able to lever the contributions from CLEA to find additional funding support from the Canada-Ontario Farm Cost Share programs, Environment Canada, the Ontario Ministry of Natural Resources, Wildlife Habitat Canada, Trees Ontario and Ducks Unlimited. Over \$5.00 in funding has been received for every dollar invested by CLEA. There are also thousands of hours in labour contributed by the farmers, LGSC staff and volunteers and local students on the projects.

The Water Quality Reports for Charleston Lake by Ontario Lake Assessments indicate that “water quality continues to improve, total phosphorous values continue to decline and oxygen concentrations have improved considerably.” Stream restoration projects and other CLEA initiatives appear to be contributing to the improvement of water quality on Charleston Lake.





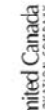
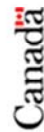
# Charleston Lake Stream Restoration Project 2007-2011

## Elbe and Wiltse Creeks

10 Farm Properties  
3 Non-Farm Properties

### Partners

Charleston Lake Environmental Association  
Leeds County Stewardship Council  
Canada - Ontario Farm Stewardship Program  
Catawqui Region Conservation Authority  
Ducks Unlimited  
Eastern Ontario Model Forest  
Eco-Action (Environment Canada)  
Frontenac Arch Biosphere Reserve  
Leeds Federation of Agriculture  
Leeds Soil and Crop Improvement Association  
Ontario Ministry of Natural Resources  
Ontario Ministry of Training, Colleges,  
and Universities  
Trees Ontario  
Wildlife Habitat Canada





## Leeds Community Pasture

The Leeds Community Pasture Association (LCPA) owns and manages one of 11 Community pastures in Ontario, located near Soperton. Up to 25 local farmers graze their cattle at the Pasture in the summer. The property is bi-sected by Soperton Creek and its adjoining wetlands, which form part of the headwaters of the Beverley Lakes and Gananoque River watershed.

Sections of the shoreline habitat in the Community Pasture are accessible by cattle and have been eroded, resulting in increased nutrient and soil inputs to the stream, wetlands and downstream lakes and loss of wildlife habitat and connectivity.



The Community Pasture Board and the Leeds-Grenville Stewardship Council (LGSC) are working together to restore this shoreline area. The objectives are to restore fish and wildlife habitat and to reduce excessive nutrient supply to prevent further enrichment and loss of oxygen. In 2010 an Environmental Management Plan was completed which identified four years of stream and wetland restoration projects on the property.

The first two years of the Plan were completed as planned in 2010 and 2011. With the



support of Environment Canada, Wildlife Habitat Canada and the Ontario Ministry of Natural Resources the LGSC and LCPA completed the installation of over four kilometers (4,050 meters) of cattle exclusion fencing along Soperton Creek, the installation of three water crossings and a solar watering system for cattle. With the support of Trees Ontario, 3,000 trees and shrubs were planted along the stream banks in 2011 by LGSC volunteers, teachers and 87 local students.

## **SUSTAINABLE FORESTS**

### **Conservation Lands Partnership**

Like many of our projects, the forging of the Conservation Land Partnership fits under many of the LGSC themes. This project started in 2007, when LGSC Council member George Sheffield started talking to us about his concern for the long-term protection of the properties owned by George, his wife Nancy, and his four siblings Rob, Margaret, Julia and Frances. These were not just any properties: they comprised 607 acres of land with seven kilometers of waterfront shoreline on Red Horse, Charleston and Little Long Lake. "The Sheffield lands feature high granite and marble ridges characteristic of the Frontenac Arch with rich, Appalachian-influenced forests including stands of pitch pine. The property features many of the target species of the Frontenac Arch including cerulean warbler, whip-poor-will, eastern musk turtle, five-lined skink, and eastern/grey ratsnake" (NCC, 2011).



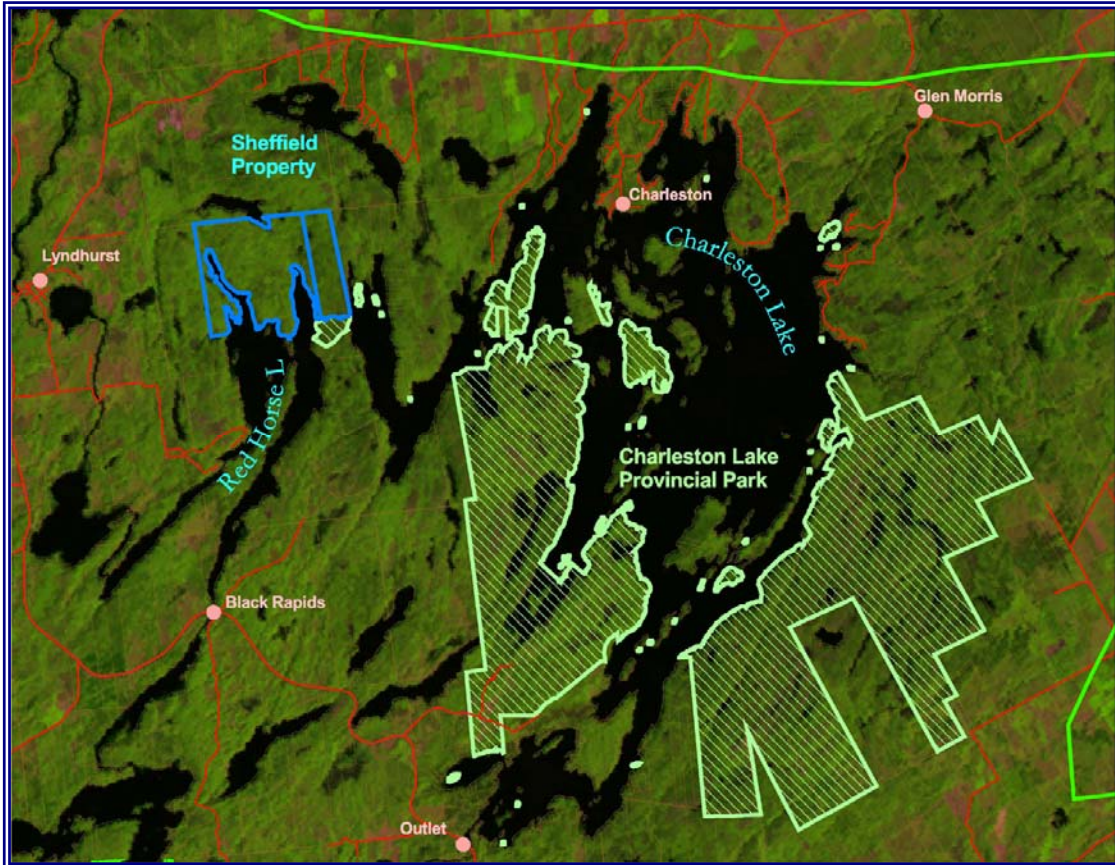
The logical recipient of the lands was Charleston Lake Provincial Park, which had previously purchased the portage to Red Horse Lake from George's father. Recognizing that this project was beyond the resources of LGSC and Ontario Parks, a partnership was formed to facilitate the negotiations and fundraising: this also included the Nature Conservancy Canada (NCC), the Thousand Islands Watershed Land Trust (TIWLT), Charleston Lake Association, the Friends of Charleston Lake Provincial Park, and the Frontenac Arch Biosphere.



Fast forward to March of 2011, when the deal was finally completed after working through many hurdles. All the parties celebrated, and the Park completed its substantial expansion. However, as it turns out the partnership had just begun its work. New opportunities have arisen in the Frontenac Arch Natural Area and we are hard at work on new land acquisition projects which will be discussed in next year's annual report.

Needless to say LGSC is very proud of the contribution that one of our Council members and his family have made to the people of Ontario.







## 50 Million Tree Program

Trees Ontario and the Ontario Ministry of Natural Resources have set a goal of planting 50 million trees in Southern Ontario by 2020. This program is designed to help mitigate the impacts of climate change while enhancing the forest cover and biodiversity of southern Ontario. Funding is provided to agencies like Conservation Authorities and Stewardship Councils to provide low-cost tree planting services to private landowners.



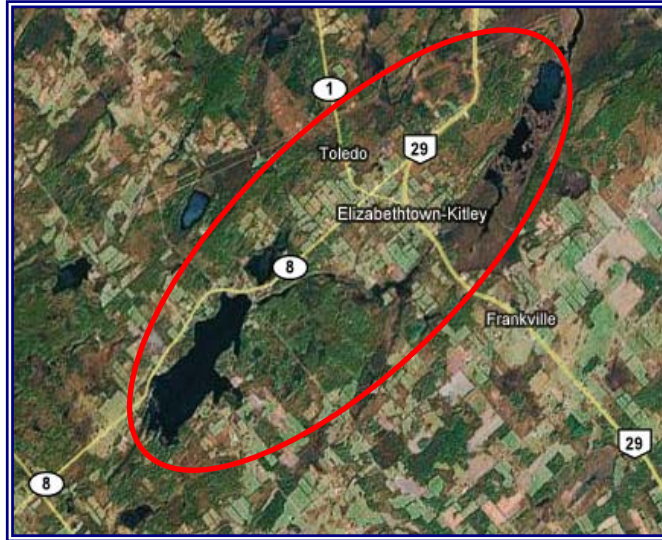
To help Trees Ontario meet their goal, LGSC has agreed to help plant up to 75,000 trees per year. In 2011, we planted 68,600 trees for ten private landowners under this program. These landowners actively participate in the program by paying a minimal charge for the trees, cutting brush and grass and by monitoring the health of the trees. LGSC works in cooperation with many partners to plant trees, including the landowners, Trees Ontario, Cataraqui, Rideau Valley and South Nation Conservation Authorities, Ferguson Forest Centre, the Upper Canada District School Board, and our contractors.





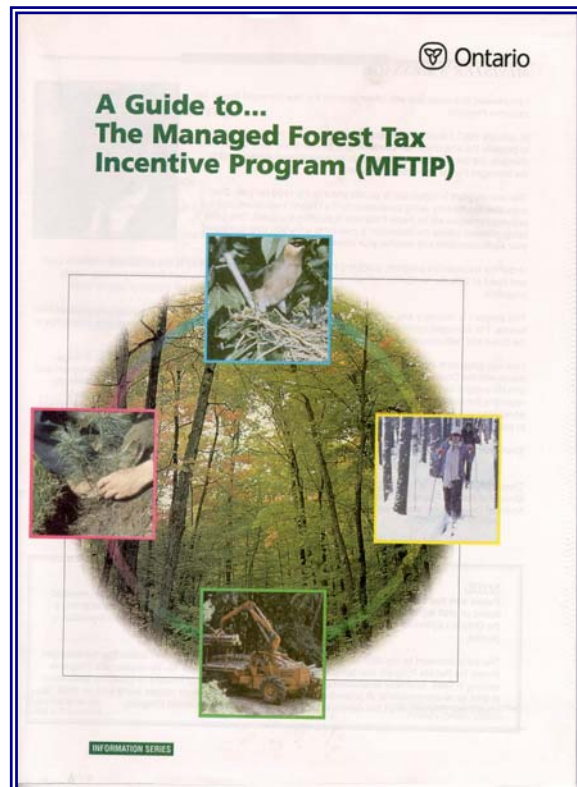
## Bellamy To Irish Lake Connectivity Project (Lake to Lake)

The Bellamy to Irish Lake corridor is a watershed which connects these two provincially significant wetlands in north Leeds. LGSC councillors Dwayne Struthers and Garnet Baker contacted the local landowners to promote the sustainable landscape concept and arrange for the preparation of Management Plans for their properties. Plans were prepared for landowners covering a total of 2,915 hectares (7,200 acres) using the principles of sustainable land-use. The Stewardship Council continues to partner with the Rideau Valley Conservation Authority (RVCA), Eastern Ontario Model Forest and Trees Ontario to implement tree planting projects identified in the plans. 2,500 trees were planted by RVCA in 2011; 167,360 trees have been planted to-date.



## Management Planning (MFTIP)

The first step towards woodlot certification is to prepare a management plan, which lays out a landowner's objectives and helps to organize management activities. By registering their Plan in the Managed Forest Tax Incentive Program (MFTIP), landowners also receive a substantial reduction in the property taxes on their woodlands. When talking to landowners at the International Plowing Match in 2007, we were surprised to learn how few people had heard of the program. As a result, the Leeds-Grenville Stewardship Council decided to provide advice and assistance to interested landowners to help them develop a Managed Forest Tax Incentive Program Plan. In 2011 Donna O'Connor assisted 16 landowners in Leeds and Grenville to prepare plans that covered 862 hectares (2,129 acres). Many of our programs are interconnected: some MFTIP landowners decide to increase their forested area and enrol in tree planting programs offered by LGSC or our partners.



## **EDUCATION AND AWARENESS**

### **Kemptville Woodlot Conference**

The 24<sup>th</sup> Annual Kemptville Woodlot Conference was held on February 23, 2011. The organizing committee is a partnership of representatives from the Leeds-Grenville Stewardship Council, Resource Stewardship SDG, Eastern Ontario Model Forest, Ontario Woodlot Association and several dedicated local individuals. The conference is an annual eastern Ontario winter event typically attended by 175 to 200 people. Our goal is to provide a range of woodlot-related displays and speakers for the diverse interests of the attending landowners. Themes for the day included the emerald

ash borer, sugar maple orchards, species at risk in the woodlot, landowner program updates, and a wrap-up talk by the Ottawa Wild Bird Care Centre.



### **Envirothon**

The annual Envirothon competition was organized by the committee of Amy, Laura, Martin, Brenda Graham, and Kim Robinson after the retirement of Envirothon stalwarts Bob Gollinger and Jack Henry. The training workshops were held at Limerick Forest (forestry and soils) and St. Lawrence Islands National Park - Landon Bay (wildlife and aquatics). The final competition for Leeds and Grenville was hosted at Charleston Lake Park. As usual we were supported by a large network of people who instructed, organized or served as judges for the competition. Teams from Brockville Collegiate Institute placed first and second, and team one from St. Michael Catholic High School placed third.





## Woodworking for Wildlife

Leeds-Grenville Stewardship Council volunteers actively support the teachers who are instructing using the Species at Risk Curriculum discussed later in this report. They provide both in-class and in-field learning opportunities that illustrate SAR concepts and other wildlife habitat conservation issues to children. Woodworking for Wildlife is one of our most popular programs with teachers and students.



The program starts early in the winter as Garnet Baker, Dwayne Struthers and their many helpers convert their supply of Ottawa Valley white pine lumber into hundreds of pre-sawn and drilled bird box kits. Then they go to the classrooms. After listening to a short presentation, each child in the class gets the opportunity to construct and take home a blue bird box. Council members and the teacher are always near at hand to offer advice, but the children do the work. In 2011 LGSC volunteers carried out eight "Woodworking for Wildlife" workshops, helping children to construct 220 nest boxes. Our last workshop was carried out cooperatively with the Lanark Stewardship Council in Montague Township, who are now embarking on a similar project in Lanark County.



## Irish Lake Conservation Club



Mrs. Newman's class from Pineview School in Athens came to the Irish Lake Conservation Club on May 31 for a day of outdoor education and fun. Garnet and Dwayne organized a great day for the kids, and the weather was perfect. Four topics were presented: history (Garnet and George), wildlife habitat (John MacKenzie and Kerry), species at risk

(Dwayne, Eric, Emily Verhoek), and tree identification (Martin).

Lorna, Eric, Lloyd and Donna all helped to keep the kids on track. In keeping with the history theme, the kids enjoyed snacks of dried apples and beef jerky between sessions. This annual event is also incredibly popular with the Council volunteers.

The competitive nature of the children emerged as they vied for top prize in the tree identification contest. By the number of smiles on the children's faces, it was apparent that the day was an outstanding success.





## **Children's Water Festival**

On May 31 and June 1 the St. Lawrence River Institute hosted a children's water festival at the Spencerville Fair Grounds. The organizing committee included Dave and Jack Henry. The Water Festival is a hands-on, minds-on multi-day event that consists of twenty-five interactive water discovery stations that are designed to be fun and educational for children. Each discovery centre conveys a message of water conservation and protection. Children spend a



full day exploring and take home important messages and information to share with their families. The River Institute coordinates a total of three festivals; one in Casselman, Spencerville and Cornwall. 300 Leeds-Grenville elementary school students attended the Spencerville session. 100 high school student volunteers presented the water discovery centres.

## **Student Bursary**

LGSC offers \$500 bursaries to graduating Leeds-Grenville County high school students who plans to enter post-secondary studies in the environmental field. This year we received a number of excellent applications. Our committee of Matt, John and Garnet awarded three bursaries this year to students from Thousand Islands Secondary School in Brockville (2) and St Michael Catholic High School in Kemptville.

## **LGSC Website ([www.lgstewardship.ca](http://www.lgstewardship.ca))**

This winter Eric decided to learn a new skill and with advice from David Bull at the Frontenac Arch Biosphere developed a new website for the newly-amalgamated Leeds-Grenville Stewardship Council. Karen continues to maintain and update the official website on behalf of the LGSC. It contains up-to-date information on the Stewardship Council and our projects, and links to other Stewardship agencies.

## **SPECIES AT RISK**

### **Species at Risk Curriculum**

Workshops were held early in 2011 to train teachers with the newly developed species at risk curriculum. The training workshops and the curriculum itself have been well received by all teachers involved, with over 40 teachers participating.

LGSC continues to work closely with the species at risk curriculum development team of teachers Rich Tamblyn and Lianne Swann, to add to the existing curriculum. 2011's focus was the development and inclusion of new curriculum lessons focussed on species at risk on the farm and in the woodlot. These new additions will be implemented early in 2012 and will be distributed to classrooms using the existing curriculum. Bird Studies



Canada has also developed a curriculum based lesson focussed on chimney swifts, a threatened bird species in Ontario. This curriculum package will be delivered to classes throughout Ontario and via the LGSC, will be delivered to classrooms with the existing species at risk curriculum.

### **Species at Risk School Presentations**

A large component of 2011's species at risk campaign has been the development and delivery of school presentations focussing on species at risk and biodiversity themes such as: what it means to be a species at risk, what are the causes of species becoming at risk, the natural histories of specific species and things we can all do to help species at risk in eastern Ontario. The presentations have been well received by close to 1,000 students, greatly exceeding targets and continue to be promoted through the school boards.

LGSC has had the opportunity to partner with St. Lawrence Islands National Park and Murphys Point Provincial Park in order to be able to access a live grey ratsnake to bring to the classrooms and this has been met with tremendous enthusiasm and success.

The species at risk presentation is very adaptable. While the target audience has been grades 4/5 and grades 7/8 that have received the species at risk curriculum, the presentation is not limited to this focus group and has been developed to be effective for any audience.



## Species at Risk 4H Club

2011 saw the growth of a LGSC run Species at Risk 4H club. 4H clubs have a long and successful history in rural Ontario and are focussed on learning by doing. In 2011, a lot was done. The club was structured to provide a learning opportunity or 'discovery session' about a specific species at risk and then follow up with a hands-on learning opportunity. Lead by Eric and then Tim, Rhonda, Kerry and Cliff volunteered to help with club activities



Some of the highlights from 2011 include; visiting a chimney swift roosting site, building turtle basking rafts, building snake habitat, designing informative posters about species at risk and show and tell with turtle replicas provided by St. Lawrence Islands National Park. Certainly one of the stand-out moments was having Shaun Thompson, the district ecologist with the Ministry of Natural Resources, provide a presentation on grey ratsnakes where the club members had the opportunity to hold and interact with a live 6.5 foot grey ratsnake.



## Species at Risk Newsletter

In 2011, LGSC began producing a species at risk newsletter called the "Species Sentinel". It is a monthly newsletter focussing on species at risk themes through entertaining and informative articles. Each issue features species spotlights, news and notes on specific projects, information about local environmental events and species at risk news from Ontario and beyond. These newsletters are posted monthly on the LGSC website and are being distributed in hard copy to a variety of interest groups.

## Grey (Black) Ratsnakes



The grey ratsnake is listed as threatened on the Ontario Species at Risk list. In 2005 with funding support from CFWIP, Garnet and Dwayne designed and built 12 wood framed, wire mesh nesting boxes to provide protection from egg predators. The structures have been deployed throughout Leeds County. They are filled annually with a variety of compost substrates designed to maintain a temperature around 30 degrees Celcius, which is necessary for egg incubation. Each year

CFWIP funds are used to build and distribute more boxes, and landowners and the Stewardship Councils in Lanark and Frontenac Counties are now involved covering the entire eastern Ontario range of the species. Garnet has also documented the plans and materials cost to make a box, which are available on the LGSC website.

In 2011 LGSC refilled four of the nest boxes with a mixture of hay, wood chips and leaves and installed temperature monitors provided by the OMNR to maintain our long-term seasonal temperature data set. The remaining boxes were refilled by the landowners. In the fall, 151 hatched ratsnake eggs were found in two structures at Dr. Ross's and Landon Bay. To the best of our knowledge, these are the only successful artificial nesting structures for grey ratsnakes in North America.





## **Bald Eagles**

Bald eagles were once quite common in southern Ontario. A combination of human disturbance, loss of habitat and lake pollution led to a dramatic reduction in nesting pairs. From the early 1980s, coincident with a significant reduction in the use of toxic chemicals, the eagles' natural reproduction rates began to recover. Today, while bald eagles have recovered in most regions they have been slow to return to some historic nesting locations in Leeds County. In Ontario the bald eagle remains a species of special concern.



LGSC Councillors have been actively installing nesting platforms in to encourage bald eagles to return to their traditional nesting grounds. Since 2007 we have installed platforms in supercanopy white pine trees on Red Horse, Gananoque, Charleston (2 platforms) and Lower Beverley Lakes and two on the St Lawrence River near Landon Bay and Davis Island.

## **Butternut**

Butternut is an endangered tree species, threatened by a fungal disease called Butternut Canker. The climate and soils of Leeds County are excellent for butternut, making it an important area for butternut conservation. In cooperation with Rose Fleguel of the Rideau Valley Conservation Authority and the OMNR Species at Risk Stewardship Fund, LGSC participates in butternut recovery activities. Many landowners have had their butternut trees catalogued by Rose as she searches for trees which show resistance to the disease.



Each year we receive and distribute butternut seedlings to private landowners. These seedlings are monitored by the landowners for signs of butternut canker, in the hope that some individuals will exhibit resistance to the canker. 100 seedlings were planted in 2011. Although we see many dead butternuts, we remain optimistic that we are contributing towards the species' conservation and potential recovery.

## Chimney Swifts

In August LGSC co-hosted a chimney swift awareness workshop with Bird Studies Canada (BSC). Bird Studies Canada is an organization dedicated to advancing the understanding, appreciation and conservation of wild birds and their habitat. Chimney swifts are native birds that have adapted to settlement by nesting and roosting in chimneys. Chimney swifts are a species at risk because they are experiencing rapid population declines. The reasons are not well understood.

Karen invited Kristyn Richardson of BSC to Brockville to talk about chimney swifts and engage volunteers in their Swiftwatch program. After an introduction from Kristyn and Karen, we went out to a locally known chimney swift roosting site to watch hundreds of chimney swifts descend for their night's rest.

In 2012 LGSC will be working to support BSC's Swiftwatch program in our area.





## **OUR COUNCIL**

### **Council Members 2011**

The strength of Leeds-Grenville Stewardship Council is the group of volunteers who work tirelessly to make a difference on the ground. We have a diverse representation including rural and urban residents, landowners, farmers, retirees, and young people who live throughout the United Counties of Leeds and Grenville. What the group holds in common is a strong commitment to land stewardship. These are the people who make Stewardship so effective and rewarding.

Co-Chair:	Andy Mannseichner	Brockville
Co-Chair:	Matt Kinghorn	Brockville
	Garnet Baker	Toledo
	Karen Brown	Delta
	Kerry Coleman	Oxford Mills
	Eric Dopson	Chantry
	Rhonda Elliott	Chantry
	John MacLeod	Gananoque
	Donna O'Connor	Elgin
	Laura Parrott	Prescott
	Greg Philliban	Spencerville
	Dave Robertson	Johnstown
	Cliff Rogers	Brockville
	Ted Royal	Brockville
	George Sheffield	Chantry
	Lloyd Stone	Forfar
	Dwayne Struthers	Toledo
	Jane Topping	Athens
	Amy Whitehorne	Addison

The Council meets once a month at various locations throughout the United Counties. Meetings usually include a social, a guest speaker and even a little time for business. Periodically we go on a tour of an area of interest. For instance this year Geoff McVey lead us on a walking tour of Limerick Forest, Amy took us on a guided walk at Charleston Lake Provincial Park and Dave Robertson organized tours for us to Greenfield Ethanol and the Port of Prescott.

## Council Members and Activities 2011





## Annual Canoe Trip

On August 6 we went on the inaugural LGSC canoe trip. Starting from the Kinch Street bridge, our route took us down Irish Creek and into the Rideau River, ending up in Merrickville. The boats had to navigate several beaver dams, and the group was delighted to see black terns, a species at risk. The route was chosen by Garnet to celebrate both Leeds and Grenville counties. The participants had a shoreline lunch, and then went back to Irish Lake for a barbeque supper featuring Lloyd and Donna's locally grown beef and delicious desserts prepared by Lorna. The land crew responsible for launching the flotilla and keeping us on route was Garnet and Lloyd.



## Staffing and Support

The field work of the Stewardship Council is completed by a variety of people.



Donna O'Connor started working as our Resource Technician in 2007. Donna's primary role is to translate our projects into on-the-ground actions, helping landowners accomplish stewardship projects on their properties. Donna has a farming and forestry background, and is responsible for delivery of our field programs, including stream restoration, tree planting and MFTIP preparation. Donna gets our projects done despite numerous challenges with the weather, computers and program funding.

Leeds and Grenville Stewardship Councils received funding from the Species at Risk Stewardship Fund to further our work with the SAR school curriculum and SAR 4H Club. Eric



Dopson started this work for us, and then moved on to work at the OMNR office in Kemptville. Eric has remained with us as a LGSC Council member. To replace Eric, Tim Wood joined the Council in October. Tim brings a wealth of experience from his

previous employment at a Conservation Authority and as an interpreter at Murphys Point Park.

We hosted a Co-op student from Athens District High School for one month. Brandon was enrolled in Jim Wilson's and Linda Ross's environment high-skills major program. He was involved in a variety of activities and got a first-hand opportunity to experience Stewardship Council projects.





## LGSC Financial Statement: January 1 to December 31, 2011

LGSC has structural and accounting controls to ensure that funds are appropriately allocated to projects that provide the optimum benefits to the community. The Council approves the Annual Workplan and meets regularly to review project progress. In addition to Martin, the Council has three other signing officers, Andy Mannseichner, Matt Kinghorn and Dave Robertson who must authorize all cheques. In addition, Dave or Andy review all income and expenses of the Council.

In 2011, project expenses exceeded income by \$7,163.82 as shown below. However, the amalgamation of assets from the Leeds and Grenville Councils has resulted in a healthy bank balance, which will ensure that we have resources to meet the deliverables of our multi-year projects.

Our ability to deliver on our objectives is due to the initial funding provided by the OMNR, the generous contributions of our many funding partners listed throughout this Report, and the overwhelming amount of time freely given by the Council Members and other volunteers involved in the programs.

Assets at Year End 2010 (Leeds):	\$ 53,968.68
Assets at Year End 2011 (Leeds):	\$ 46,804.86
Assets at Year End 2011 (Grenville)	\$ 26,872.41
<b>Total Assets December 31, 2011:</b>	<b>\$ 73,677.27</b>